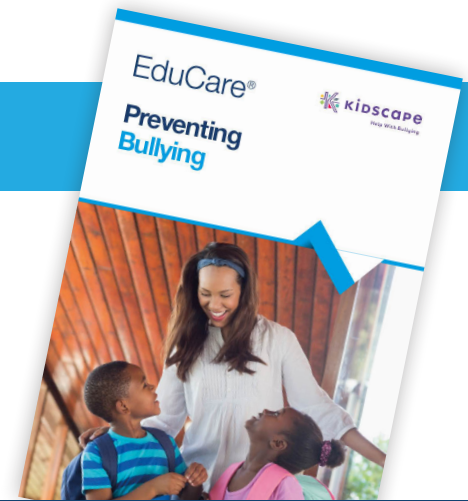


Preventing Bullying

This course will provide a thorough insight into preventing bullying behaviour, covering the essential facts to help you understand, recognise and tackle bullying behaviour in your organisation or setting. At EduCare we ensure that all of our training courses are written and endorsed by experts. This course has been written in partnership with Kidscape.



Course details

- Level 2 course (as graded against the nationally accepted levels)
- Four modules with four multiple-choice questionnaires
- Four CPD credits*
- Optional narration of the course modules and questionnaires for accessibility
- Personalised downloadable certificate
- 70% pass mark
- Printable modules for future reference

*1 CPD credit equals up to 1 hour of learning

Course content

Module 1 What is Bullying Behaviour?

- The definition of bullying including the five key components of bullying behaviour.
- Bullying as a group behaviour including the various roles played: victim, participant/bully, reinforcer, defender, bystander/outsider.
- Types of attack: physical, verbal and emotional bullying.
- Forms of bullying including: racist and/or faith targeted bullying, homophobic, biphobic or transphobic bullying, sexist or sexual bullying and disablist bullying.
- Cyberbullying including the roles played by social networking sites, trolling, email, online games, mobile phones and instant messaging.
- Statistics on who is affected and where bullying is most likely to occur.
- A look at the main legislation including: Education and Inspections Act 2006, The Education (Independent School Standards) Regulations 2014, Equality Act 2010, Children Act 1989.



Module 2 The Effects of Bullying Behaviour

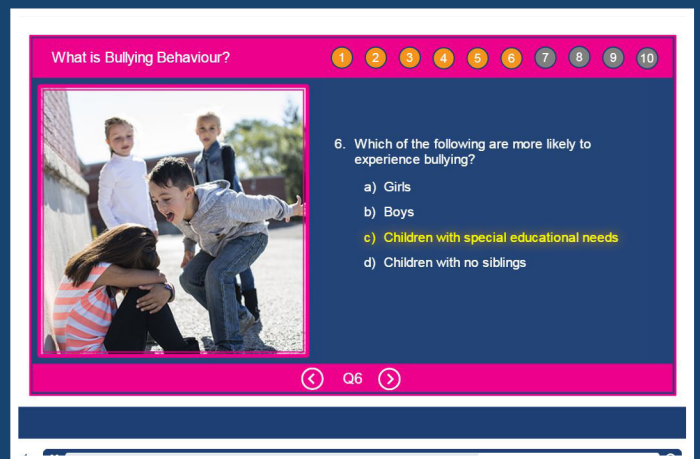
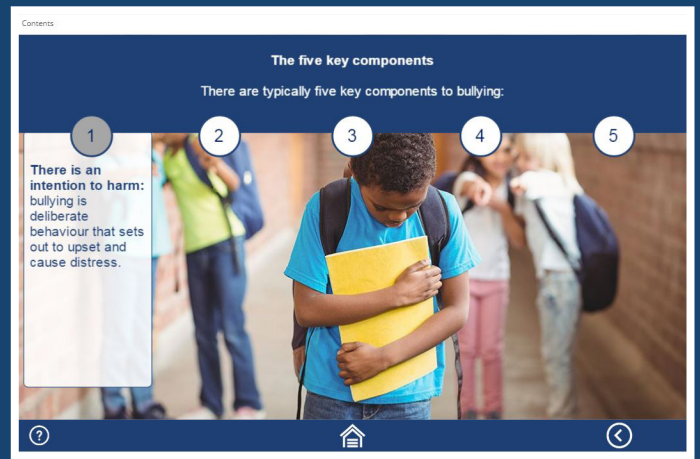
- Common characteristics of those who are bullied and those who bully.
- How to recognise a child who is being bullied.
- The damaging physical and emotional effects of bullying behaviour.

Module 3 Dealing with Bullying Behaviour

- Reporting and recording bullying.
- Investigating incidents.
- Searching students' property.
- Learning from incidents.
- Working with group dynamics including working with: victims, bullies, reinforcers, bystanders or outsiders and defenders.
- Working with parents or guardians.
- Bullying in playgrounds and other areas including the role of CCTV to deter or record bullying incidents.
- Bullying outside school premises including supporting children with cyberbullying incidents.

Module 4 Preventing Bullying Behaviour

- Explains how your anti-bullying policy should act on two levels: preventative and reactive.
- Steps to help you develop a new anti-bullying policy or revise an existing one including: assigning the role of anti-bullying lead, assessing your organisation's needs and goals, developing the policy and assessing feedback.
- Practical suggestions for developing your anti-bullying policy.
- The importance of providing training and support for all staff.
- Your individual responsibilities with regard to preventing bullying in your organisation including supervising children carefully, helping children to be more assertive and being an effective role model.



This course is suitable for

This course is relevant for anyone who comes into contact with children and young people of any age.

Key features

- Visually engaging and highly interactive
- National statistics relating to bullying behaviour
- Answer explanations for those who achieve the pass mark
- Additional resources to expand learning

Purchase options

1. Available as a standalone course on the EduCare website.
2. Buy as part of one of our multi-course licences. For further information, please call 01926 436212 to discuss purchase options and licences.



Contents

Disabled children and those with SEN

Disabled children and those with SEN are significantly more likely to experience all forms of bullying.

31% of disabled children experienced name calling	21% experienced some form of social exclusion
20% had been threatened with violence	18% had experienced actual violence

Longitudinal Study of Young People in England, 2014

A young girl with dark hair and bangs, wearing a pink shirt, has colorful paint on her hands and face. She is smiling and looking towards the camera.

Contents

Where does bullying occur?

Bullying can occur wherever children and young people spend their time, but Ofsted found that the majority of bullying takes place at school. Click the play button below to learn more about what the research showed.

11% travelling from one place to another	12% around where children go to school	18% around where children live
--	--	--------------------------------

A progress bar showing 0%, 50%, and 100% with a play button icon to the right.

Contents

Types of attack

A child may encounter bullying attacks that are:

Physical	Verbal	Emotional
Pushing	Shoving	Ridiculing
Excluding someone	Spreading rumours	Intimidating
Non-consensual touch	Hitting	Humiliating
Kicking	Sarcasm	Spitting
Tormenting	Name calling	Pinching

Why choose us?



“ I have now been using the EduCare programme to support understanding in Child Protection and Safeguarding for over 5 years. It is an invaluable resource which allows learners to work at their own pace and also organisations to provide a broad and detailed level of support to staff. ”

Matthew Burfield
Principal/CEO GEMS Education

www.educare.co.uk
01926 436 211
online@educare.co.uk

